

Sea Breeze Striped Tote Bag

Designed by Janet Goddard www.patchworkpatterns.co.uk

Finished Size 16" x 14 ½" x 4 ½" (40cm x 37cm x 11.5cm) excluding handles

A roomy striped tote bag which is a quick and easy afternoon make.



Sea Breeze Striped Tote Bag

Designed by Janet Goddard www.patchworkpatterns.co.uk

Finished Size 16" x 14 ½" x 4 ½" (40cm x 37cm x 11.5cm) excluding handles

A roomy striped tote bag which is a quick and easy afternoon make.

Fabric Requirements

Fabric	Design	Usage	Amount
Fabric One	2081/B Icons	Base	6" x WOF
Fabric Two	2085/R Anchors	Outer bag stripes	4" x WOF
Fabric Three	2086/B Deck Stripe	Outer bag stripes and handles	Fat Quarter
Fabric Four	2085/B Anchors	Outer bag stripes	4" x WOF
Fabric Five	2081/W Icons	Outer bag stripes	4" x WOF
Fabric Six	2084/B Shells	Lining	50cms (20")
Other	Fusible Wadding	20" (50cm) fusible wadding	

Notes;

All seams are ¼"

All fabrics quantities are cut width of fabric (WOF) and allow for one way designs

Cutting Instructions:

Fabric One:

Cut two (5 ½" x 16 ½") strips

Fabric Two:

Cut two (3 ½" x 16 ½") strips

Fabric Three:

Cut two (3 ½" x 16 ½") strips

Cut two (3" x 20") strips

Fabric Four

Cut two (3 ½" x 16 ½") strips

Fabric Five

Cut two (3 ½" x 16 ½") strips

Fabric Six:

Cut two (16 ½" x 16 ½") rectangles

Wadding:

Cut two (16 ½" x 17 ½") rectangles

Cut two (1" x 20") strips

To Stitch the Outer Bag:

1. To stitch one side of the bag, stitch the fabric strips together in the following order: 5 ½" strip fabric one, fabric two strip, fabric three strip, fabric four strip, fabric five strip. If you are using a directional print remember that the 5 ½" strip is at the bottom. Press all seams downwards towards the 5 ½" strip. Repeat for the other side of the bag.
2. Iron the (16 ½" x 17 ½") rectangles of fusible wadding to the reverse of the units completed in step one.
3. Quilt horizontal lines across each outer bag section ½" away from each seam line.
4. Place the outer bag units on top of each other, right sides facing, matching the seams and stitch down both sides and across the bottom.
5. To shape the base of the bag, match the centre fold of the base with each side seam. Measure in 2" along the seam line from the outer point. Pin and draw a line with a marking pencil from edge to edge horizontally. Stitch on this line and then trim off excess fabric. Turn the bag right side out.

To Stitch the Handles:

6. To stitch the handles take the two (3" x 20") strips of fabric three and press under ¼" on one long edge of each. Lay the (1" x 20") strip of fusible wadding down the centre of the wrong side of each handle and iron in place.
7. Fold the raw edge of the fabric to the centre of the wadding and then the folded edge on top. The folded edge should overlap the raw edge. Pin in place. Top stitch down the folded edge. Top stitch along each outer edge.
8. Pin the ends of the handles, right sides facing to the top edge of each outer bag section, positioning the end of each handle 4 ½" in from the outer edge of each side, placing the handle in the centre of the 4 ½" marking. Tack in place.

To Stitch the Lining:

9. Take the two (16 ½" x 16 ½") fabric four rectangles and place them right sides together. Stitch around three sides leaving a 5" opening in one side for turning.
10. To shape the base of the lining in the same way as the outer bag follow the instructions in step five.

To Stitch the Bag Together:

11. Place the outer bag inside the lining so that the right sides of the fabric are facing. Make sure that the handles are pushed down between the two layers. Pin the outer bag and the lining together at the top, lining up the side seams and raw edges.
12. Stitch around the top edge, back stitch at the beginning and end. Turn the bag through the opening and press the seam around the top edge of the bag so that it lays flat. Topstitch all the way around the top of the bag. Stitch the gap in the lining closed.
13. Enjoy using your bag!



2079/1 Scenic



1774/B Sky



2082/B7 Yachts



2085/R Anchors



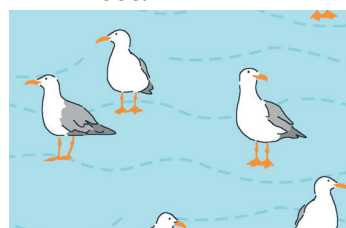
2082/B4 Yachts



2085/B Anchors



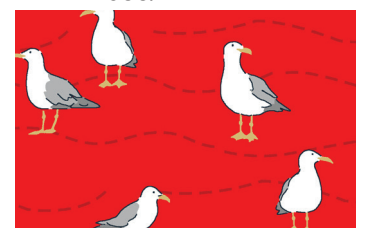
2081/W Icons



2083/B Seagulls



2081/B Icons



2083/R Seagulls



2080/T Beach Huts



2084/B Shells



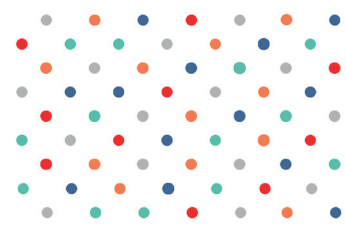
2080/Y Beach Huts



2084/T Shells



2086/B Deck Stripe



1948/B Multi Dot



Cushion A



Cushion B



2087/1 Bunting Panel

Actual Size 24" x 44" (60 x 115cms)

Each Cushion 20" x 20" (50 x 50cms)
 Designed by Lynne Goldsworthy of lilysquilts.blogspot.com
 Full instructions available Jan 19 www.makoweruk.com

ALL DESIGNS 50% OF ACTUAL SIZE